



TASTING ROOM

PORT

Composition: 65% PVC, 35% Polyester

Width: 137cm

Weight: 929 gsm

Abrasion resistance: (BS EN ISO 12947-2/BS EN 14465: 2003 Annex a) : >35,000 rubs

Change in shade @ 3000 revs: grade: grade 4-5

Colour fastness to rubbing (dry): BS EN ISO 105 x 12: 2002: 4/5

Colour fastness to rubbing (wet): BS EN ISO 105 x 12: 2002: 4

Colour fastness to light -STD 5, BS EN ISO 105 B02: 2014: 6

Tensile strength (strip method): BS EN ISO 1421, Method 1:1998:

Longitudinal Mean max force 506N, Mean elongation 54.5%

Transverse Mean max force 181N, Mean elongation 216.85%

Tear Strength: BS EN ISO 4674-1 (Method A):2003: longitudinal 48.6N, transverse 26.3N

Flame retardant: BF5852 SOURCE 0 & 1 (cigarette and matches): pass

Care instructions: Clean locally with damp cloth and mild detergent.

Usage: Upholstery; loose covers and cushions





1



2



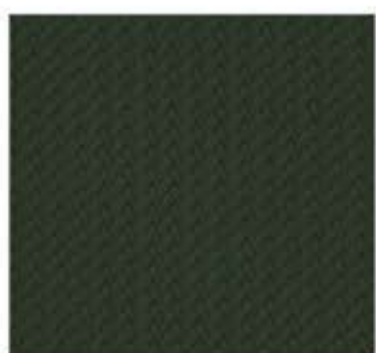
3



4



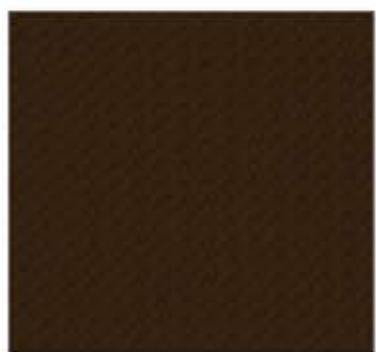
5



6



7



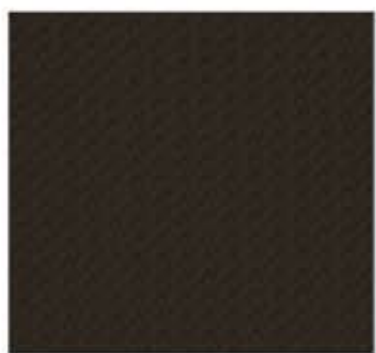
8



9



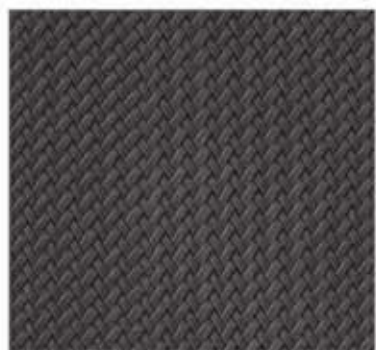
10



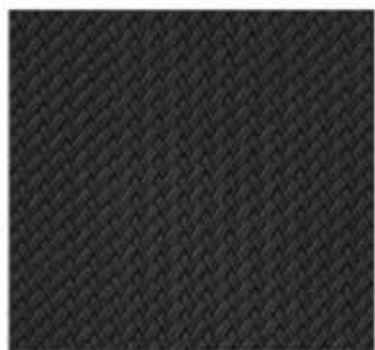
11



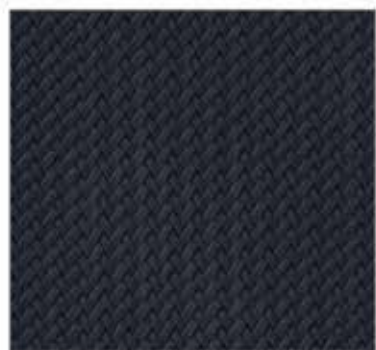
12



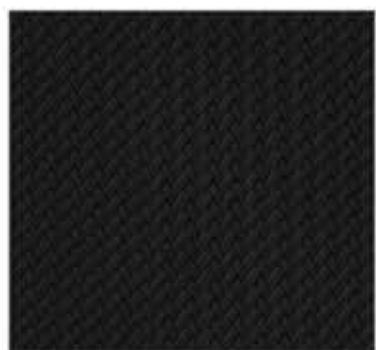
13



14



15



16



17



18



19



20



21



22