



TASTING ROOM

MARTINI

Composition: 100% polyester

Width: 145 cm

Weight: 231 gsm

Diamond design: Repeat vertical: 1.5 cm/Repeat horizontal: 1 cm

Stripe design direction: up the roll, Repeat vertical: 0.5 cm/Repeat horizontal: 0.5 cm

Abrasion resistance: (BS EN ISO 12947-2/BS EN 14465: 2003 Annex a): >25,000 rubs

Change in shade @ 3000 revs: grade: grade 4

Colour fastness to rubbing (dry):BS EN ISO 105 x 12: 2002: 4/5

Colour fastness to rubbing (wet):BS EN ISO 105 x 12: 2002: 3/4

Colour fastness to light -std 5 (BS EN ISO 105 B02: 2014: 5

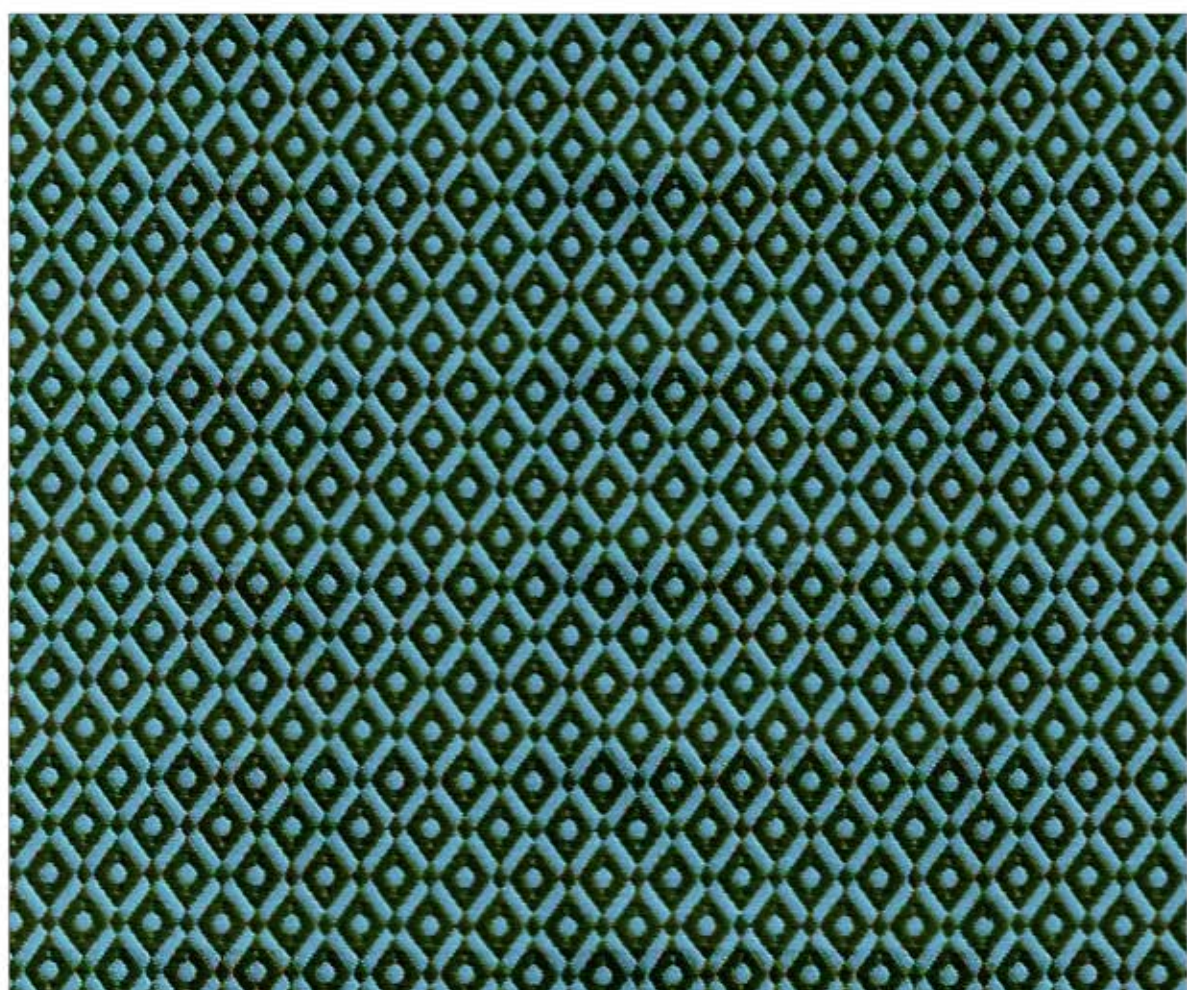
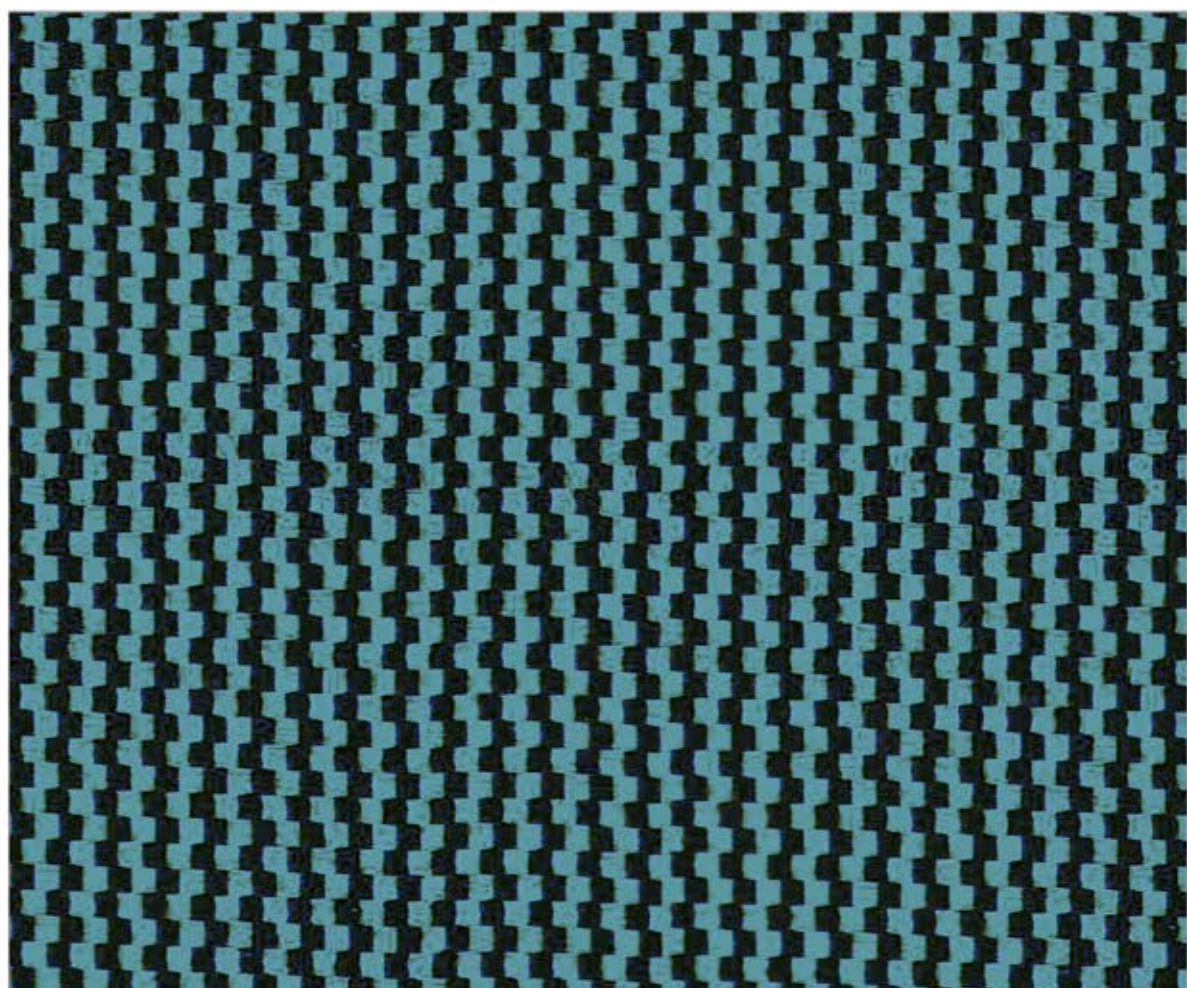
Martindale pilling - BS EN ISO 12945-2: 2000: 4/5

Care instructions: Dry clean



Usage: Upholstery; curtains; loose covers and cushions







101



1



102



2



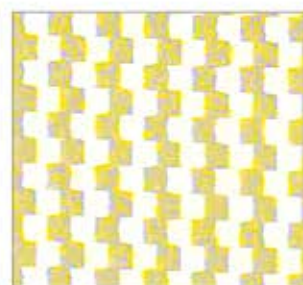
112



12



113



13



105



5



110



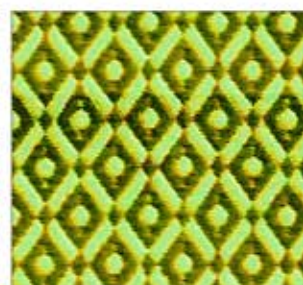
10



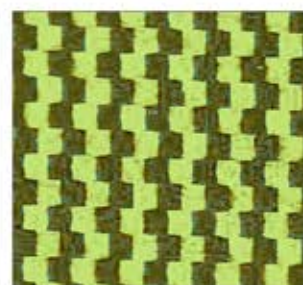
109



9



120



20



111



11



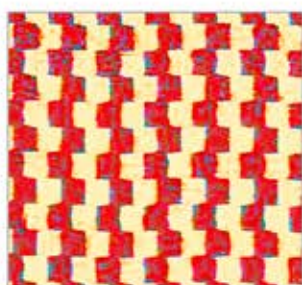
119



19



118



18



117



17



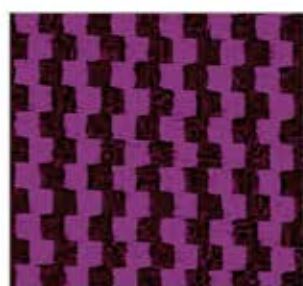
115



15



116



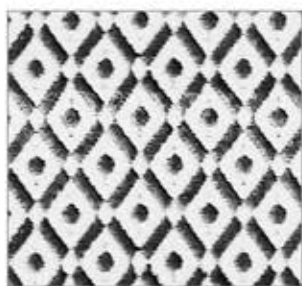
16



103



3



104



4