

WILD  
WEST

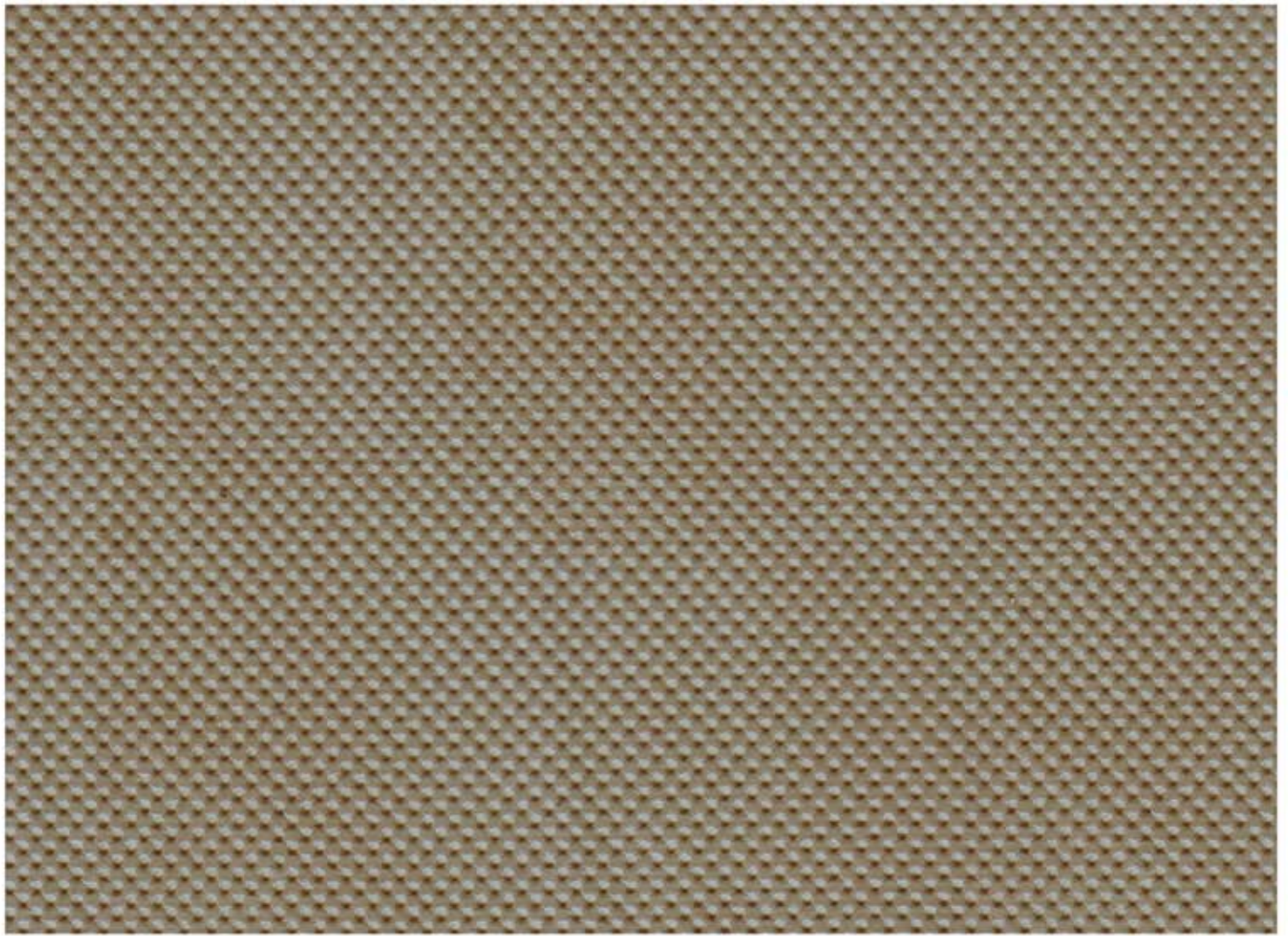
# *Point*

FREEDOM

The logo features a stylized 'X' shape composed of four curved segments meeting at the center. Below the 'X' is the text 'ELITE' in a large, bold, serif font, followed by 'HOMENEAR' in a smaller, all-caps, sans-serif font, and 'SINCE 1919' in an even smaller font at the bottom.

ELITE  
HOMENEAR  
SINCE 1919





## *Point*

Composition: 2%PU, 74% PVC, 24% Non-Woven

Width: 140 cm

Weight: 500 GSM

Thickness: 1.30 mm  $\pm$  10%

Abrasion resistance: (BS EN ISO 12947-2/BS EN 14465: 2003 Annex a): >50,000 rubs

Colour fastness to rubbing: BS EN ISO 105 x 12: 2002: 5

Colour fastness to light std 5:BS EN ISO 105 B02: 1999: 4

Tensile strength: TS EN ISO 1421:1998: Horizontal: 315 - 60%, Vertical: 345 - 105%

Tear strength: TS EN ISO 4674-1: Horizontal: 80, Vertical: 100

Flexing endurance: TS EN ISO 5402: 100,000

### **CARE INSTRUCTIONS**

Wipe with a damp cloth and a mild detergent.

Wipeable finish







7



17



27



37



47



4



14



5



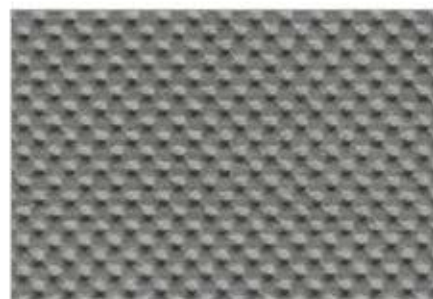
15



1



2



20



30



10