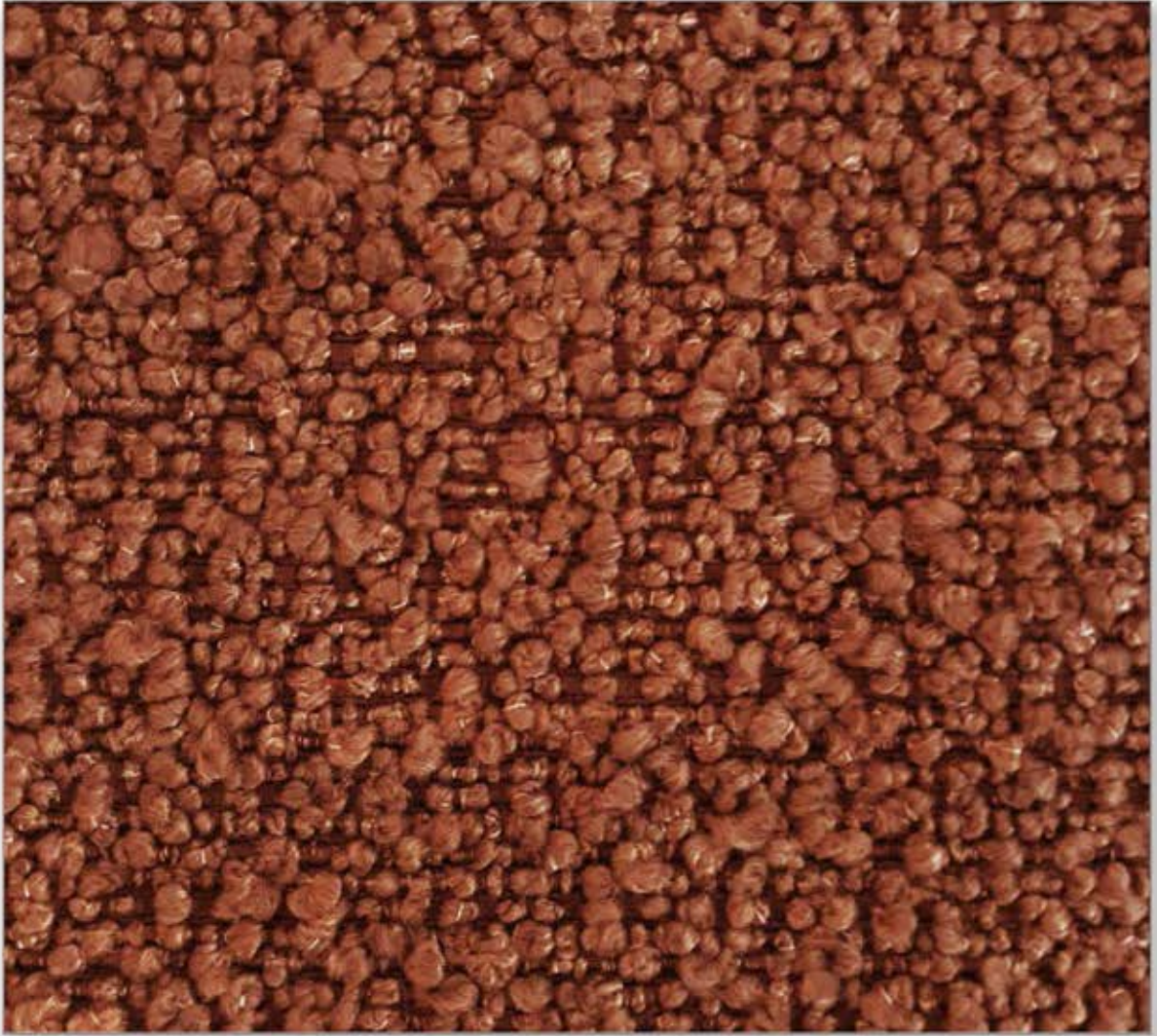


# CURLY



Composition: 95% Polyester, 5% Acrylic

Weight: 430 gsm

Width: 143cm

Abrasion resistance: (BS EN ISO 12947-2/BS EN 14465: 2003 Annex A) : >40,000 rubs

Change in shade @ 3000 revs: grade 4

Martindale pilling: BS EN ISO 12945-2: 2000: 4-5

Colour fastness to rubbing (dry): BS EN ISO 105 x 12: 2016: 4-5

Colour fastness to rubbing (wet): BS EN ISO 105 x 12: 2016: 3-4

Colour fastness to light STD 5: BS EN ISO 105 B02: 2014: 5+

Water fastness in water: EN ISO 105-E01: 4

Colour fastness to washing with soap or soap and soda: EN ISO 105-C10: 4

Wash fastness: EN ISO 105-C10: 4

Colour fastness to dry cleaning: EN ISO 105-D01: 4

Seam slippage: BS EN ISO 13936-2: 4.6 mm

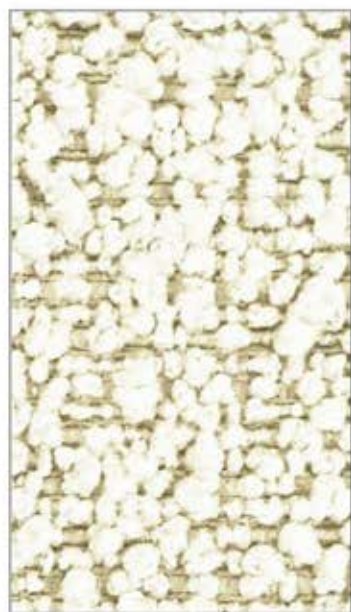
OEKO-TEX

REACH





1



2



3



22



5



7



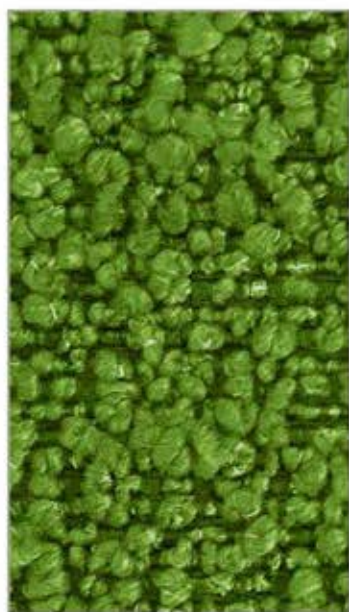
23



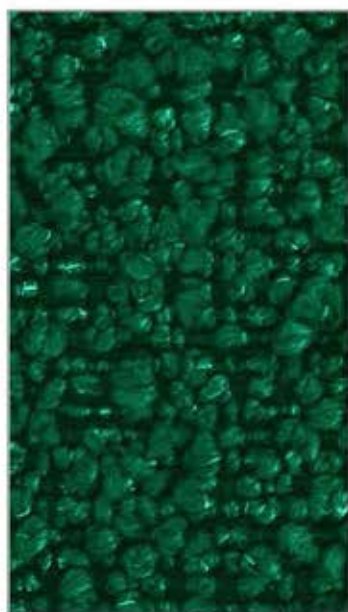
24



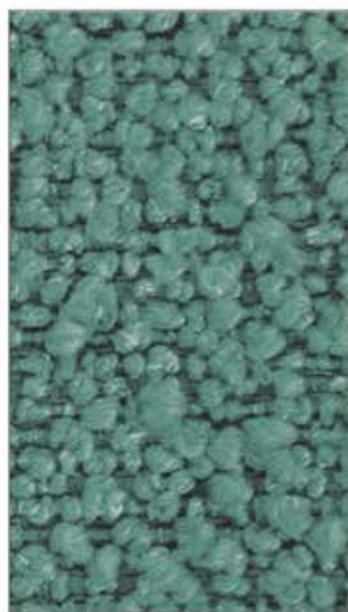
21



20



19



18



17



4



15



16